



**AGARWAL  
EARTHMOVING ENTERPRISES**



## ABOUT US



Agarwal Earthmoving Enterprises has evolved as an importer, supplier, and stockist of aftermarket spare parts for Construction, Mining, & Earthmoving Equipments – Since 1975.

AEE deals in Spare Parts of Excavators, Motor Graders, Loaders, Dozers, Dumpers, and DG Generators, established by manufacturers such as Hitachi, Komatsu, Volvo, Kobelco, Caterpillar and many others.

AEE is equipped with a wide range of products from the best of manufacturers based in countries like the USA, Italy, Singapore, U.K, Korea, Japan, and China, with whom we have developed good relations.

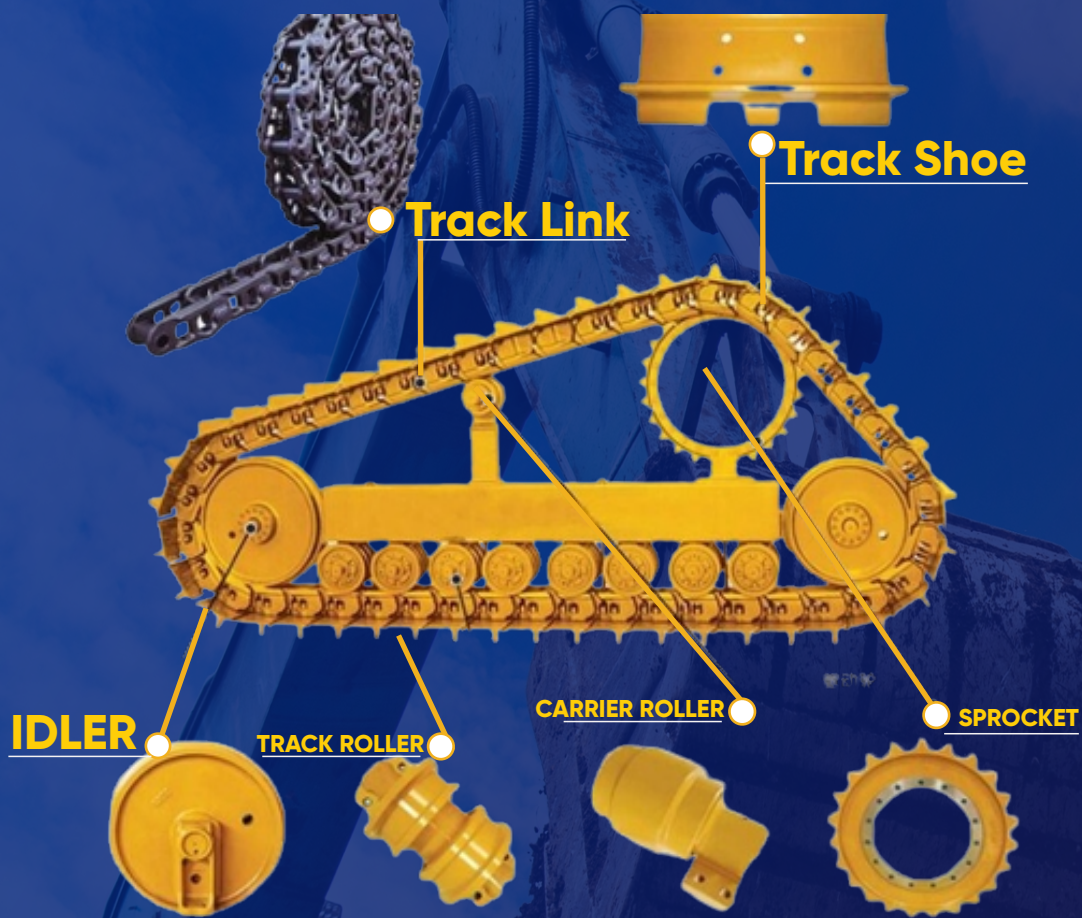
AEE is a 100% family-owned company, promoted by Mr. Govind Ram Gupta, and backed by a team of dedicated professionals. The entire team of AEE is committed to meeting or exceeding the requirements of their customers by maintaining a large stock in hand and providing superior quality, service, and product support – at all times. We take great pride in providing the quality that our esteemed clientele expects from us.

With the experience of more than five decades, AEE has grown significantly and has become a major supplier of heavy equipment spares in the country. In the process, AEE has established a reputation for dependability and a willingness to work as a partner.





# UNDERCARRIAGE



## EXCAVATOR & DOZERS BRANDS

CATERPILLAR

KOMATSU®

KOBELCO

**VOLVO**  
Construction Equipment

**HITACHI**  
Hitachi Construction Machinery (Australia) Pty Ltd

## OTHER AVAILABLE BRANDS



대창단조주식회사  
DAECHANG FORGING Co.,Ltd.



**DGO®**

**PUKDOO**  
INDUSTRIAL

**Ktsu**

**CF™**  
UNDERCARRIAGE  
MAXIMIZE · RELIABLE · DURABLE



## TOOTHPOINTS & ADATORS



### Importer & Stockiest of Forging Tooth Points

We are specialist stockists of forged tooth points and adapters. Forged bucket teeth are widely applied in rock digging, ice-breaking and mine-digging, earth-moving, and other severe working environments, which highly increase the working efficiency, and decrease the replacement and maintenance cost.

**CATERPILLAR**

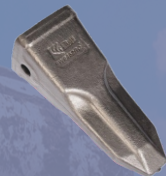
**MODELS**



1U3302RC (J-300)



1U3352RC - CAT-320



9W8452RC (CAT-330)

**KOMATSU**

**MODELS**



205-70-19570 (PC-200)



205-70-19570 (PC-200)



207-70-14151 (PC-300)



207-70-14151RC (PC-300)



208-70-14270RC (PC-400)



208-70-14270RC (PC-400)



**HYUNDAI**

**MODELS**



2713-9038



## TOOTHPOINTS & ADATORS



**VOLVO**  
Construction Equipment

**MODELS**



14530544 – Volvo -210



14530544RC- Volvo 210



1171-01910- Volvo 300



14553243RC –Volvo 460



14553244RC – Volvo 480

**HITACHI**  
Hitachi Construction Machinery (Australia) Pty Ltd

**MODELS**



Tb00822 RC – Hitachi 200



SK-210RC



SK-350RC



72A0005 Liugong

**Adaptors also Available for the same models**

**KOMATSU**

**CATERPILLAR**



**HYUNDAI**

**VOLVO**  
Construction Equipment

**KOBELCO**

**HITACHI**  
Hitachi Construction Machinery (Australia) Pty Ltd



## CUTTING EDGE & END BITS



## AVAILABLE MODELS

**CATERPILLAR**

**KOMATSU®**

## CATERPILLAR MODELS

**D6R**

**D6G**

**D8K**

**D9L**

## KOMATSU MODELS

**D50**

**D65**

**D85**

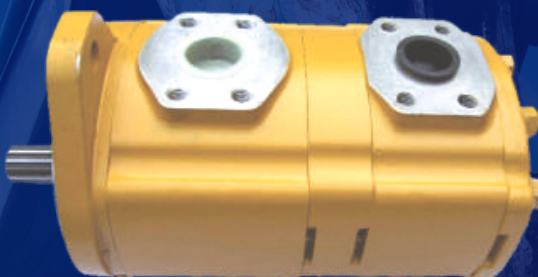
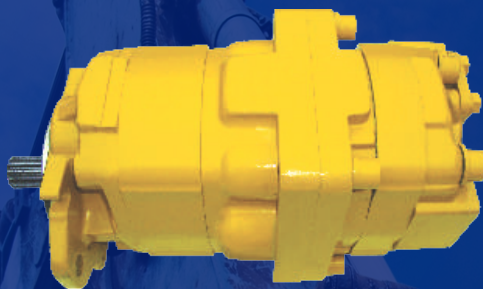
**D155**

## GRADERS BLADES

PART NO	APPLICATION
5D9553,5D9554	CAT 120H
9J3657	CAT 120K
7D1576,7D1577	CAT 140H, 140K2



## ENGINE PUMPS



AVAILABLE FOR  
EXCAVATORS &  
DOZERS FOR

**CATERPILLAR**

**KOMATSU**

**VOLVO**  
Construction Equipment

## POPULAR MODELS

PART NO	APPLICATION
705-11-38010	D85/D65
14X-49-11600	D85/D65
07430-72203	D65
4N4864	D4D
14602247	Volvo 480



## HYDRAULIC CYLINDERS



AVAILABLE FOR

**KOMATSU**

**CAT**

**VOLVO**  
Construction Equipment

## POPULAR MODELS

PC-210

CAT-320

VOLVO-480



## BOLTS & NUTS + RECOIL SPRINGS AND CYLINDERS



## AVAILABLE MODELS

**CATERPILLAR**

**CAT-572**

**D6H**

**D6G**

**D7G**

**D8K**

**120H**

**KOMATSU®**

**D-50**

**D65**

**D80**

**D155**

**D355**



## MOTOR GRADER PARTS



**KOMATSU®**

## GRADER PARTS



**GEAR**

23A-70-15170



**ADJUSTERS**

23A-70-13120



**SHAFT**

23A-70-15140



**RIM WHEEL**

23A-70-15170



**HUB**

23A-70-11132



**BEVEL GEAR ASSAY**

23A-22-11200



## GRADER PARTS



**PISTON**

2G5369



**ADJUSTERS**

23A-70-13120



**WORM GEAR**

6G5533



**COVER**

8D-8805



**PINION**

8W5092



**GEAR**

9D1142



**UNIVERSAL JOINT**

112-5495



**SPINDLE**

147-3309



**YOKE**



**AUTHORISED DISTRIBUTORS**



**대창단조주식회사**  
DAECHANG FORGING Co.,Ltd.  
**KOREA**

**TRACK LINK ASSEMBLY .TRACK  
SHOES& SPROCKET SEGMENTS**



MIN DA

**DGO**  
CHINA

**IDLERS, SPROCKETS,  
TRACK ROLLERS / BOLT & NUTS**



**VOLVO EXCAVATOR, GRADERS  
& DUMPER PARTS**



**COSTEX  
TRACTOR PARTS  
USA**

**COMPLETE RANGE OF  
CAT & KOMATSU PARTS**



**ETP ITALY**

**RIMCO**

**CAT**

**TURKEY**

**RIM WHEELS FOR ALL  
GRADERS**



**COMPLETE RANGE OF  
CAT & KOMATSU PARTS**



**MTK**  
IS MAKINATARI YEDFK PARCA

**Ktsu**

**IDLERS, SPROCKETS &  
TRACK ROLLERS**

**MTW**

**GRADER BLADES, SIDE CUTTERS,  
CUTTING EDGE & END BITS**

**PUKDoo**  
INDUSTRIAL

**IDLERS AND SPROCKETS**





## VISION



- HIGH-QUALITY PARTS & SERVICE
  - MAINTAINING HEALTH & SAFETY AT WORK
  - PROVIDE A WIDE RANGE OF PRODUCTS
- PROMPT RESPONSE & TIMELY DELIVERY



## OUR MISSION

We strive to provide our customers with their needs with the lowest possible prices, the best choices available, and the utmost convenience.





**RELIABLE PRODUCTS  
WITH  
EXCEPTIONAL QUALITY**



**+91 98113 78785**



**vaibhav.aee@gmail.com**

